



Unit 2/21 Kimberley Drive TATTON, NSW
 2  1  1

\$349,000

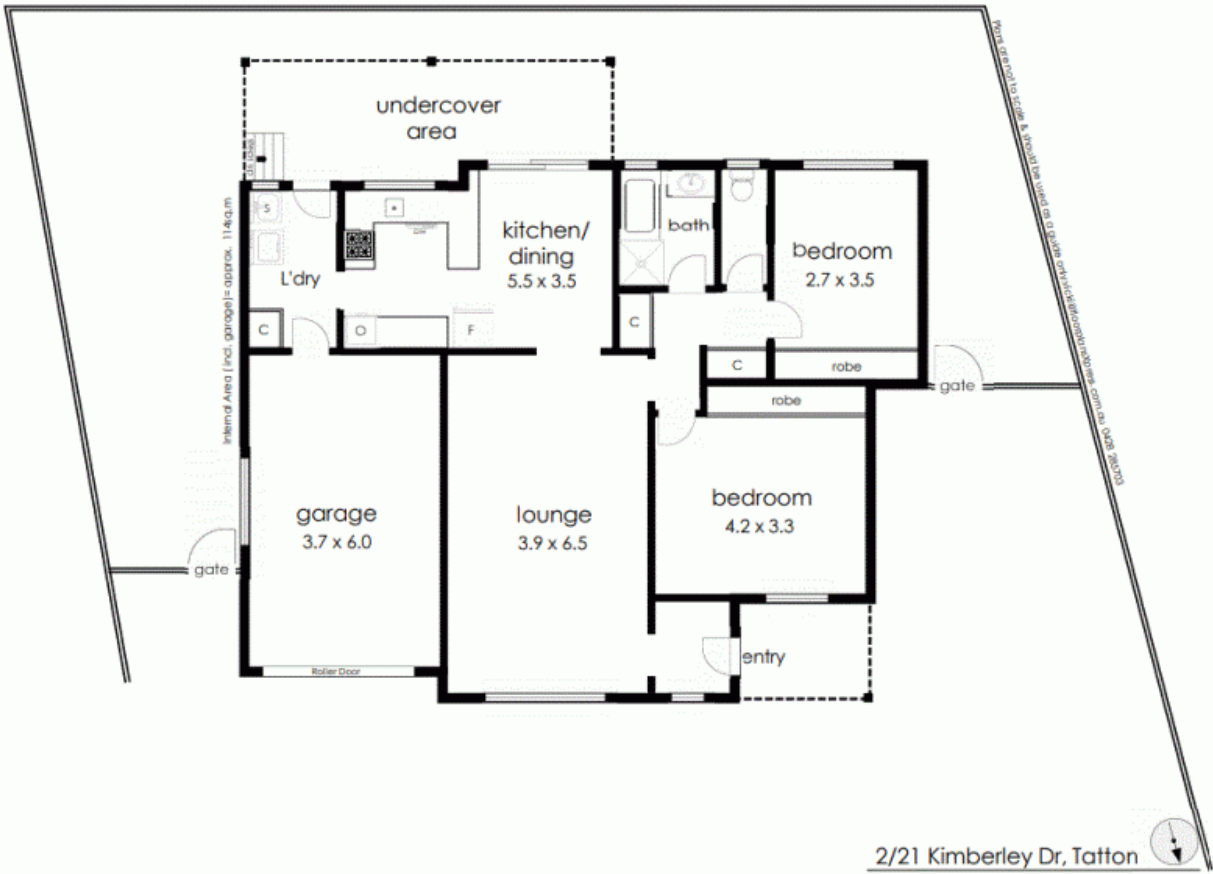
Type: Unit
Sold Date: 26/08/2021

This charming two-bedroom villa has been meticulously maintained. You will be instantly impressed from the moment you pull up at the front with the manicured gardens and established trees. Spacious open plan living, Combined kitchen meals - The kitchen features ample storage, gas cooking, wall oven and dishwasher. The dining area comfortably takes a six-seater dining setting and a glass sliding door that opens to the outdoor alfresco area. Both bedrooms are spacious with built-in robes. Only moments to Koorringal shopping centre, leading schools and transport services.

LIVING AREAS
 Open plan lounge and dining

KITCHEN
 Functional kitchen
 Electric cooking

Gillian Davies
 0490 537 675



Internal Area (incl. garage) = approx. 114.0m²

Notes: structural steel & concrete used as per the drawings. All dimensions are approximate. All measurements are to the center of the wall unless otherwise stated.

